

Fern Garden

Table runner - 11" x 69" square (30cm x 1.75m)

Place mats 11" x 14" (30cm x 35cm)

Designed by Lynne Goldsworthy of lilysquilts.blogspot.com
using the Fern Garden collection from Makower UK www.makoweruk.com



Fern Garden Table Runner and Place Mats

Table runner - 11" x 69" square (30cm x 1.75m)

Place mats 11" x 14" (30cm x 35cm)

Fabric requirements for table runner

SKU	Description	Requirement	Cut
2050S	Lattice (incl binding)	20" ½ metre	Eight 1" WOF strips sewn end to end and cut into two 10 ½", twelve 12" and two 69 ½" lengths Four 2 ½" WOF strips
2072Q	Montage	FQ	Two B templates
2072S	Montage	FQ	One A, one B and one C template
2073G	Palm*	FQ	Two B templates
2073S	Palm (backing)	1 yard 1 metre	Two equal lengths
2074Q	Pineapple*	FQ	Two B templates
2075Q	Flamingo*	FQ	Two B templates
2077Q	Leaf Scatter	FQ	Two B templates
Wadding	15" x 73" 40cm x 1.85m	279 Cotton Mix 80-20 from http://www.vlieseline.com/en	
Threads		Aurifil 50wt for piecing and 40wt for quilting from http://www.aurifil.com	
Templates		A, B and C templates (tape the B1 and B2 templates together at the red line to make the B template)	

Fabric requirements for four place mats

SKU	Description	Requirement	Cut
2050S	Lattice (incl binding)	¾ yard ¾ metre	Ten 1" WOF strips sewn end to end and cut into eight 10 ½", sixteen 12" strips and eight 14 ½" lengths Five 2 ½" WOF strips
2072Q	Montage	FQ	Four E templates
2072S	Montage	FQ	Four D and four F templates
2073G	Palm*	FQ	Two E templates
2073S	Palm (backing)	1 yard 1 metre	Four 15" x 18" rectangles
2074Q	Pineapple*	FQ	Two E templates
2075Q	Flamingo*	FQ	Two E templates
2077Q	Leaf Scatter	FQ	Two E templates
Wadding	Four 40cm x 50cm (15" x 18") rectangles	279 Cotton Mix 80-20 from http://www.vlieseline.com/en	
Threads		Aurifil 50wt for piecing and 40wt for quilting from http://www.aurifil.com	
Templates		D, E and F templates	

* Since these prints are directional, take care when cutting to ensure the wedges are cut with the pattern facing in the desired orientation

Notes:

- Read the pattern in full before starting.
- $\frac{1}{4}$ " seams are used throughout except where stated otherwise.
- Press after each seam, pressing seams open or to one side as preferred.
- WOF - width of fabric - a strip of fabric cut from selvedge to selvedge.
- Make sure to visit <http://www.makoweruk.com/projects/> to ensure you are working from the most up-to-date version of the pattern.

Making the quilt top

1. Cut the fabrics as shown in the fabric requirements table.
2. Follow the main table runner and place mat images for layout. Sash the A, B and C (table runner) and the D, E and F (place mats) pieces together using the 1" x 12" lattice strips, t rimming away excess fabric after pressing.
3. Sash the ends of the table runner and the sides of the place mats with the lattice 1" x 10 $\frac{1}{2}$ " strips.
4. Sash the top and bottom of the table runner with the lattice 1" x 69 $\frac{1}{2}$ " strips and the top and bottom of the place mats with the lattice 1" x 14 $\frac{1}{2}$ " strips.

Finishing the quilt

1. Sew the binding strips end to end using diagonal or straight seams as preferred and press wrong sides together along the length to make a double fold binding.
2. Make a quilt sandwich for each item, basting together the table runner or place mat back, the wadding and the top.
3. Quilt as desired then trim the square, removing excess wadding and backing. We quilted a vertical lines approximately $\frac{3}{4}$ " apart using a cream 40wt Aurifil thread on the front and back.
4. Bind, taking care to mitre the corners.

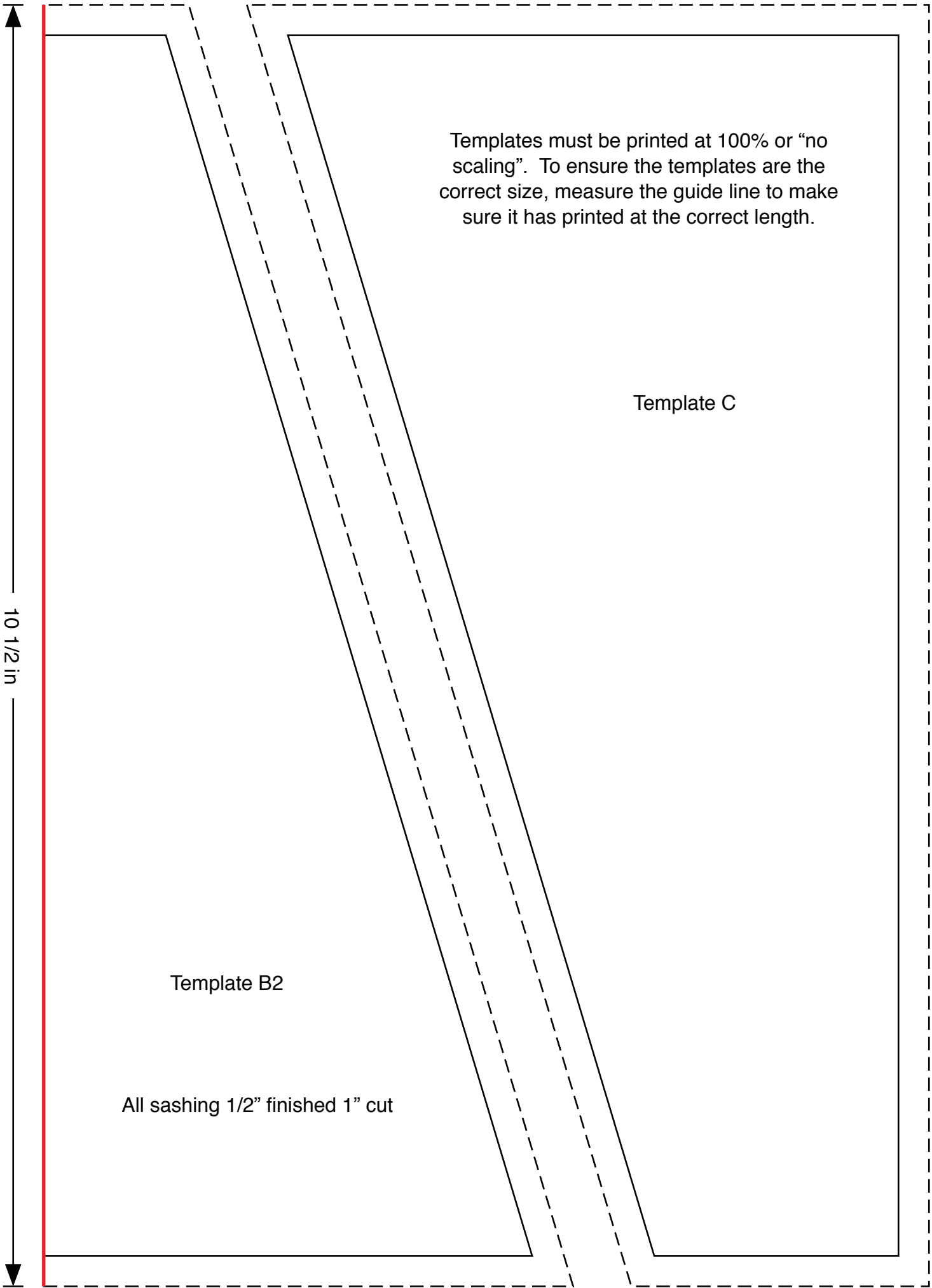
Templates must be printed at 100% or “no scaling”. To ensure the templates are the correct size, measure the guide line to make sure it has printed at the correct length.

Template A

Template B1

Join templates B1 and B2 at the red line to make the B template

10 1/2 in



7 3/4 in

Template D

Template F

Template E

Templates must be printed at 100% or "no scaling". To ensure the templates are the correct size, measure the guide line to make sure it has printed at the correct length.



2072 S Montage



2072 Q Montage



2075 G Flamingo



2073 G Palm



2073 S Palm



2075 Q Flamingo



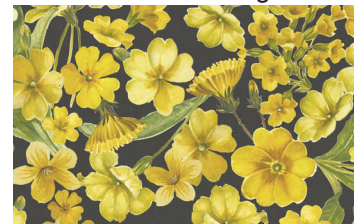
2076 Q Primrose



2077 G Leaf Scatter



2077 Q Leaf Scatter



2076 S Primrose



2078 S Fern Geo



2074 S Pineapple



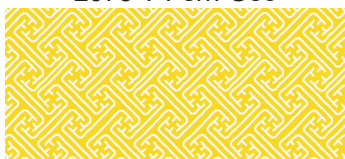
2074 Q Pineapple



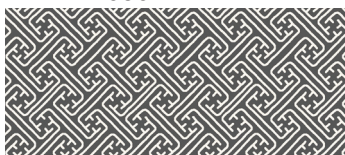
2078 G Fern Geo



2078 Y Fern Geo



2050 Y Lattice



2050 S Lattice



Table runner - 11" x 69" square (30cm x 1.75m)

Place mats 11" x 14" (30cm x 35cm)

Designed by Lynne Goldsworthy of lilysquilts.blogspot.com

Free instructions available to download www.makoweruk.com

ALL DESIGNS 50% OF ACTUAL SIZE